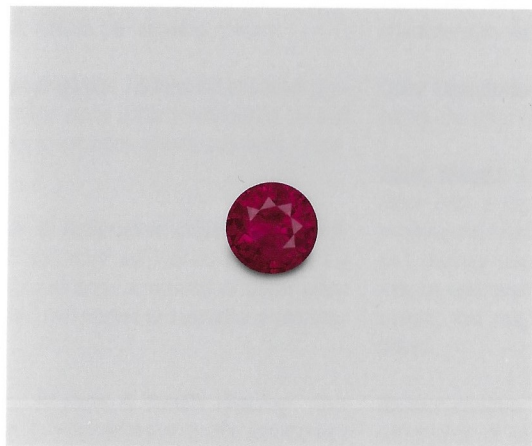
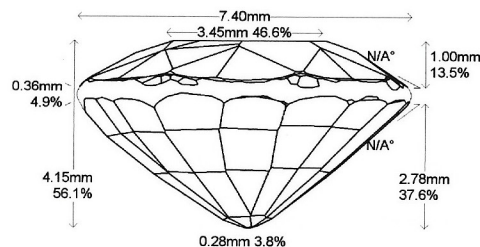


Imaging



Images do not accurately portray size or color.

Accu-Vu™ Imaging:



Comments:

General Report Comments:

Identification

Document No: 1088724 Validation Date: 30 November 2017

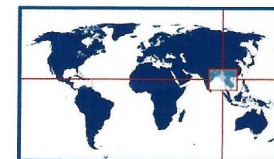
Identification
Mineral Type: Natural Corundum
Variety: Ruby Color Description: Red

Carat Weight: 1.77 cts Shape: Round
Measurements: 7.45 - 7.40 x 4.15 mm Cutting Style: Mixed Cut

Comments:

Origin

Origin
Provenance: Burma (Myanmar)



Comments: Based on available gemological information, it is the opinion of the Laboratory that the origin of this material would be classified as Burma (Myanmar - Mong Hsu).

Enhancement

Enhancement
Standard: Heat Additional: Clarity
Stability Index: Color Stability: Excellent Degree: Minor
Type: Heating Residues
Stability Index: Excellent to Very Good

Comments: Rubies are commonly heated to modify their color and appearance. Heating residues are deposited along healed fissures during the heating process.

1	2	3	4	5	6	7	8	9	10
Excellent	Very Good	Good	Fair	Poor					

Enhancement Stability Index™

None	Insignificant	Minor	Moderate	Strong	Prominent
Extremely Rare	Very Rare	Rare	Uncommon	Common	Very Common

Degree of Clarity Enhancement & Relative Rarity™

Christopher P. Smith, President

