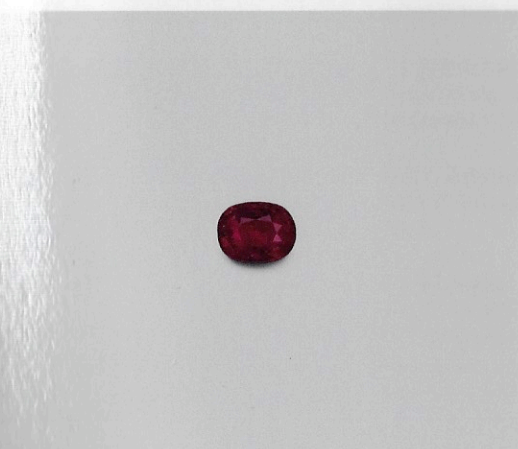
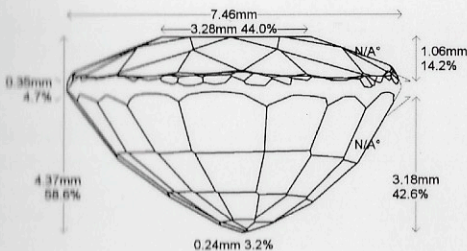


Imaging



Images do not accurately portray size or color.

Accu-Vu™ Imaging:



Comments:

General Report Comments:

Document No: 1118865

Validation Date: 30 November 2021

Identification

Mineral Type: Natural Corundum
Variety: Ruby

Transparency: Transparent
Color Description: Red

Carat Weight: 2.99 cts
Measurements: 9.81 x 7.46 x 4.37 mm

Shape: Oval
Cutting Style: Mixed Cut

Comments:

Identification

Origin

Provenance: Burma (Myanmar)

Comments: Based on available gemological information, it is the opinion of the Laboratory that the origin of this material would be classified as Burma (Myanmar - Mong Hsu).



Origin

Enhancement

Standard: Heat
Stability Index: Color Stability: Excellent

Additional: Clarity
Degree: Minor
Type: Heating Residues
Stability Index: Excellent to Very Good

Comments: Rubies are commonly heated to modify their color and appearance. Heating residues are deposited along healed fissures during the heating process.

Enhancement

1	2	3	4	5	6	7	8	9	10
Excellent	Very Good	Good	Fair	Poor					

Enhancement Stability Index™

None	Insignificant	Minor	Moderate	Strong	Prominent
Extremely Rare	Very Rare	Rare	Uncommon	Common	Very Common

Degree of Clarity Enhancement & Relative Rarity™

M. Chaipaksa

Monruedee Chaipaksa, Senior Gemologist

Christopher P. Smith

Christopher P. Smith, President

